

HERTFORD RD ENFIELD, LONDON

CLIENT: Enfield Council
INSTALLER: Rosehill Highways

PRODUCTS: Lane Separators



ISSUES

- On Hertford Road in Enfield, on-street car parking spaces are positioned in between the main road and the cycle lane.
- Despite white line markings, cars constantly encroach into the cycle lane when parking, creating a dangerous hazard for cyclists.
- Sometimes cars even park in the cycle lane, forcing cyclists onto the pavement or main carriageway.

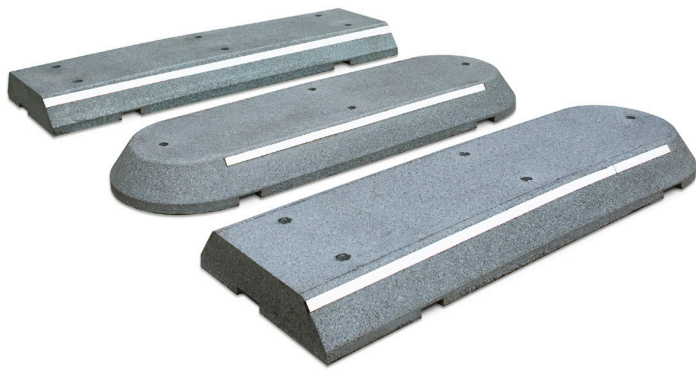
OBJECTIVES

- 1 Prevent vehicles entering the cycle lane by introducing robust physical segregation between the cycle lane and on-street car parking spaces.
- 2 Ensure the segregation products do not impede car doors from being opened when cars are parked in the on-street parking spaces.
- 3 To prevent flooding, ensure the segregation products selected do not stop water flowing into the drain gullies located at the road edge.
- 4 Ensure cars parked in the on-street parking spaces can still be accessed from either side of the vehicle.
- 5 Ensure the Lane Separators are visible in the dark.



SOLUTION

- 1 Enfield Council considered two of our surface-mounted delineation products for this project – the Narrow Cycle Lane Defender, or the Lane Separator.
- 2 Due to the space available, Enfield Council selected the Lane Separator (500mm), which is more than double the width of the Narrow Cycle Lane Defender (235mm).



Lane Separators with standard finish



Installation of Lane Separators featuring Heritage finish

- 3 The Lane Separator is the height of a standard UK kerb, ensuring parked cars can open their doors.
- 4 Reflective bollards and retroreflective studs were installed into the Lane Separators to increase visibility.
- 5 The Lane Separators incorporate drainage channels and were installed with sufficient space between each section to allow water to flow into the sewerage system.

"Having parking bays next to an unsegregated cycle lane created potentially unsafe conditions for cyclists on Hertford Road. We needed to introduce physical cycle lane segregation, and Rosehill Highways' Lane Separators were the ideal solution. The Lane Separators were installed in just a few hours, with no excavation and no need to close the road, reducing labour and traffic management costs. Cyclists can now feel safe and secure when riding on Hertford Road."

Ian Neville – Enfield Council



RESULTS

- Incursions by vehicles into the cycle lane have been eliminated.
- Cyclists report feeling safer and more confident cycling in the segregated cycle lane.
- People parking on the street are able to get in and out of their vehicles without impediment.
- Surface water on the road is able to flow freely into the drainage gullies.

